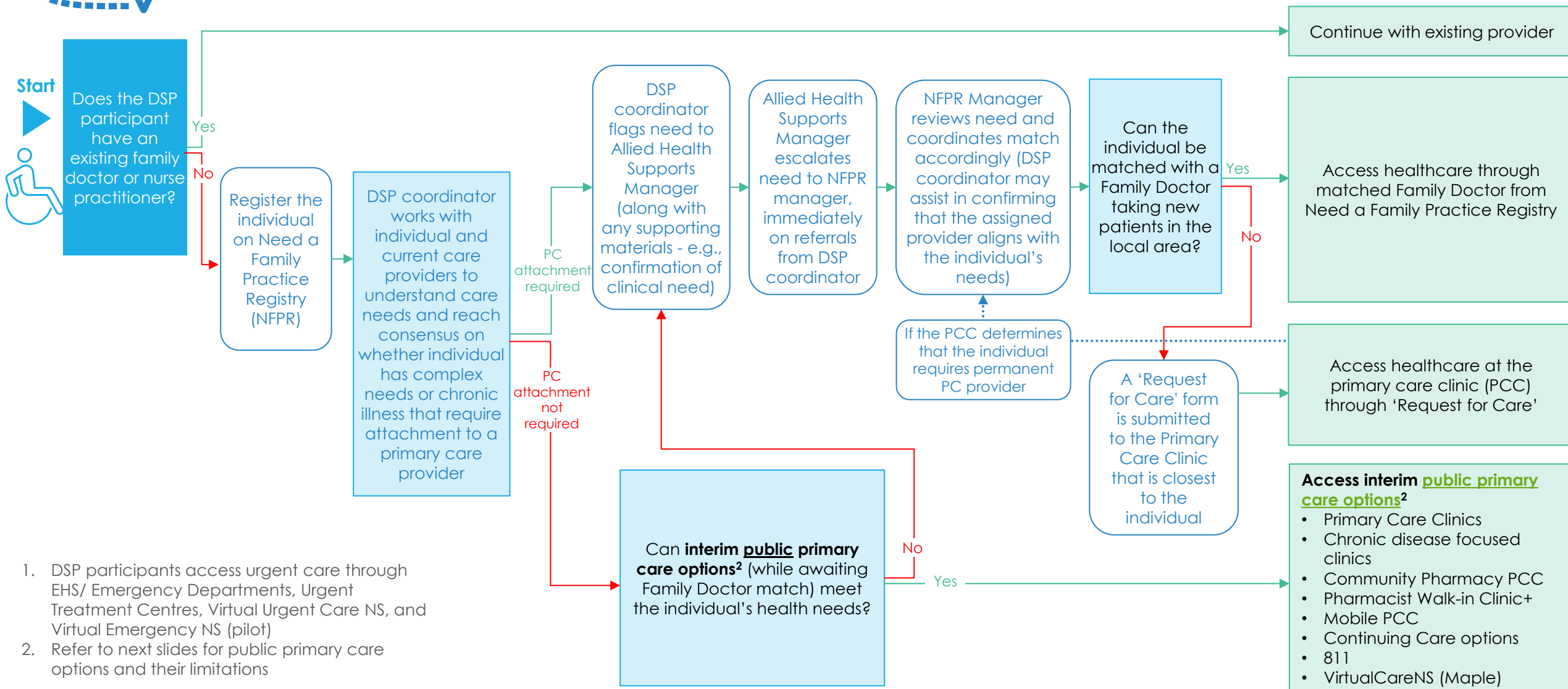


# Primary Care Pathway for DSP Participants



# Primary Care Pathway for DSP Participants

The flowchart outlines the pathways for accessing non-urgent primary care<sup>1</sup> for DSP participants transitioning from facilities to community



# Interim Public Primary Care Options\* (while awaiting match)

Refer to most updated primary care options in <https://www.nshealth.ca/wheretogoforhealthcare>

3

Type of Service / Support	Provider(s)	Zone	Healthcare Professionals	Exclusions/ Limitations
Primary Care Clinics	NSH	All	Nurse practitioners and family physicians	• By appointment only, walk-ins are not accepted
Chronic disease focused clinics	NSH	All – locations vary	Physicians specializing in chronic conditions, psychotherapists, dietitians, occupational therapists, and physiotherapists	
Mobile Primary Care Clinics	NSH	All – locations vary	Nurse practitioners and family physicians	• Locations and timing vary
Community Pharmacy Primary Care Clinics	NSH / PANS	All	Pharmacists	• May not be suitable for complex needs or mobility-limited clients
Pharmacist Walk-in Clinic+	NSH / PANS	All – locations vary	Pharmacists	• May not be suitable for complex needs or mobility-limited clients • Locations and timing vary
Continuing Care options: Home Care and Community Care, Live Well at Home Programs	NSH / SLTC	All	Registered Nurses, Continuing Care Assistants (CCA), and home support workers	
VirtualCare NS	NSH	Virtual – Maple platform	Nurse practitioners and family physicians	• Not suitable for individuals with communication barriers or tech limitations
811	DHW	Telephone	Registered Nurses	• Not suitable for individuals with communication barriers

\*Non-urgent care only. DSP participants access urgent care through EHS/ Emergency Departments, Urgent Treatment Centres, Virtual Urgent Care NS, and Virtual Emergency NS (pilot)